



#### INSTRUCTIONS:

1. ADD SOME COLOUR + CHRISTMAS MAGIC
2. CUT CAREFULLY ALONG THE SOLID RED OUTLINE
3. FOLD EACH FLAP WHERE THE DASHED LINES SHOW
4. CHOOSE YOUR STAMP, CUT IT OUT + GLUE IT ON
5. WRITE YOUR LETTER TO SANTA AND SLIP IT INSIDE
6. GLUE THE FLAPS TO SEAL YOUR ENVELOPE TIGHT



Dear

SANTA



---

---

---

---

---

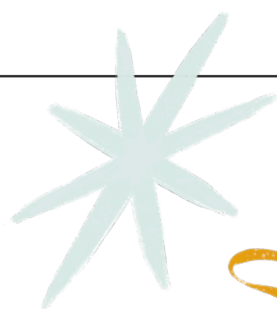
---

---

---

---

---



*Thank you, Santa!*  
*your friend*

---

